

# STOP MAINTAINING TRAILERS BASED ON TIME.

WHY CALENDAR-BASED MAINTENANCE IS COSTING YOUR FLEET MORE THAN YOU REALIZE

## TRAILER MAINTENANCE

# SWITCH TO A MILEAGE-BASED MAINTENANCE SYSTEM.

Most transportation companies perform maintenance too early or too late because they lack accurate mileage visibility. Both scenarios drive unnecessary cost.

## WHERE TRANSPORTATION COMPANIES ARE OVERSPENDING ON MAINTENANCE

### 01

#### OVER-SERVICING

Trailers are brought in for maintenance based on time-intervals, not mileage, generating service events that are not needed.

#### IMPACT

- Preventative Maintenances (PMs) performed on underutilized trailers
- Wasted labor and parts spend

### 02

#### UNDER-SERVICING

High-mileage trailers exceed ideal service thresholds without visibility, creating silent risk across the trailer fleet.

#### IMPACT

- Increased breakdown risk on-road
- Higher roadside repair costs

### 03

#### DATA GAPS

Without mileage tracking, maintenance decisions rely on assumptions and manual data gathering, with no accountability.

#### IMPACT

- No defensible maintenance strategy
- Inconsistent servicing across trailer fleet

With the TGI Connect Mileage Report, trailer fleets can schedule PMs based on mileage thresholds, reduce unnecessary maintenance through accurate data analysis, and have all of this pushed through to the fleet management software.

**15-30%**

of maintenance events performed too early

**10-20%**

potential reduction in maintenance spend

**\$300-\$800+**

wasted per unnecessary service event

**SATELLITE**

mileage accuracy at the trailer level

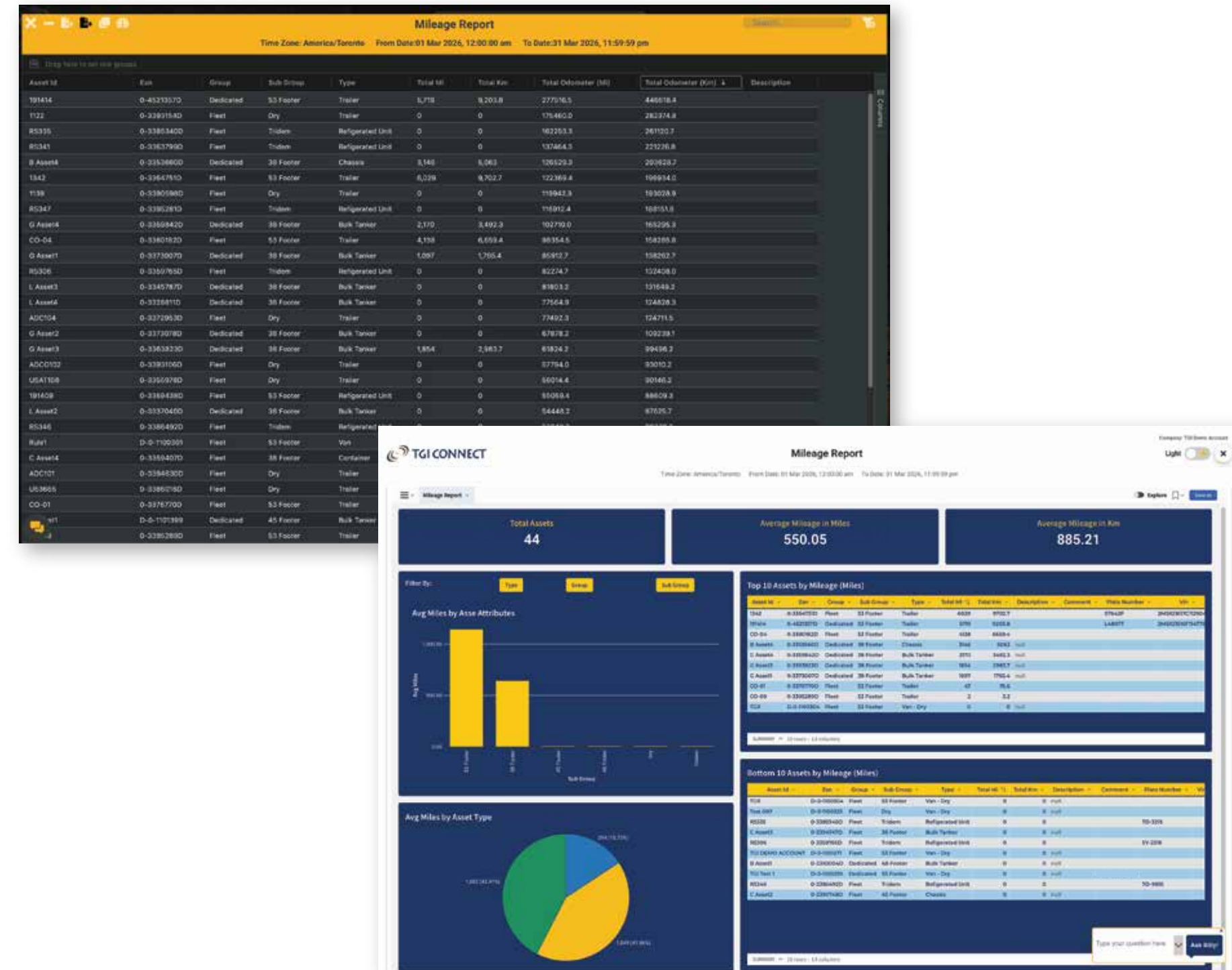
## HOW IT WORKS

- 1 TGI hardware device installed on trailer
- 2 Satellite tracking captures movement and accurate mileage
- 3 Maintenance threshold alerts determine when action needs to be taken/scheduled
- 4 Operations teams act with precision scheduling and threshold alerts

## ONE REPORT, COMPLETE CONTROL OVER MAINTENANCE OPERATIONS.

# MILEAGE-BASED MAINTENANCE

TGI Connect tracks mileage at the trailer level, allowing you to identify exactly when a trailer requires service, eliminate the guesswork and blanket scheduling, and standardize decisions across the entire trailer fleet.



## WHAT YOU WILL SEE

- Miles per trailer - current and historical
- Trailers approaching or exceeding service thresholds
- Over-serviced vs. under-serviced assets identified by mileage
- Maintenance timing consistency across the entire fleet
- Threshold alerts - automated notifications when service is due or upcoming

## WHAT IT ENABLES

- Miles per trailer - current and historical
- Trailers approaching or exceeding service thresholds
- Over-serviced vs. under-serviced assets identified by mileage
- Maintenance timing consistency across the entire fleet
- Threshold alerts - automated notifications when service is due or upcoming

## ROI EXAMPLE

A 1,000 trailer fleet reducing just **1 unnecessary PM per trailer** annually:

# \$300K-\$800K

in avoided spend, recovered directly to the bottom line.

One customer reduced **1.5 months** of maintenance costs for their 3000 trailers leading to savings of:

# \$1.3 MILLION



REDUCE UNNECESSARY PMS



EXTEND WHERE APPROPRIATE



PREVENT COSTLY FAILURES



# TURN TRAILER MAINTENANCE INTO A CONTROLLED INVESTMENT, NOT A COST.

**BOOK A DEMO TODAY**

www.tgi-connect.com